

KX-TDA50/100/200

Hybrid IP-PBX

KX-TDA 50/100/200 SYSTEM SPECIFICATIONS		
Switching		Non-Blocking Time Division Multiplexing (TDM)
Power Source		AC120V 60Hz
Wiring		SLT: One Pair (T, R) DPT: One Pair (D1, D2) or 2 Pair (T, R, D1, D2) APT: 2 Pair (T, R, D1, D2) DSS: One Pair (D1, D2)
Certification No.	KX-TDA100/200 KX-TDA50	ACJMF03AKX-TDA100 ACJMF03AKX-TDA50
Ringer Equivalence No.		0.3A
Facility Interface Code		02LS2, 04DU9.BN/DN/1KN/1SN, METALLIC
Service Order Code		9.0F, 6.0P
Dimensions	KX-TDA50 KX-TDA100 KX-TDA200	10-3/4" X 14-3/4" X 4-5/8" 13-1/3" X 15-3/5" X 10-4/5" 17-1/5" X 16-2/5" X 10-4/5"
Operating Environment		Temperature: 0°C TO 40°C (32°F to 104°F) Humidity: 10% TO 90% (Non Condensing)
Consumption	KX-TDA50 with Main PS KX-TDA50 with Main + Optional PS KX-TDA100 with PSU-M KX-TDA200 with PSU-M KX-TDA200 with PSU-L	100V AC to 240V AC, 1.5A, 50Hz/60Hz 100V AC to 240V AC, 3.0A, 50Hz/60Hz 210W, 2.2A (at 120V AC, 60Hz) 240W, 2.5A (at 120V AC, 60Hz) 490W, 5.1A (at 120V AC, 60Hz)

KX-TDA50/100/200 PORT CAPACITY					
Max. Total Port (Extension + Trunk)			KX-TDA50	KX-TDA100	KX-TDA200
			28	96*	192**
Max. Extension Port	Proprietary Telephone	SLT (Analog Telephone)	24	64/128 DXDP	128/256 DXDP
		IP Telephones	4	64	128
			12	64	128
Max. Trunk Port	Max. CO (PSTN)		12	64	128
	Max. T1		-	2 (48-Ch)	4 (96-Ch)
	Max. PRI-ISDN (23B)		-	2 (46-Ch)	4 (92-Ch)
	Internal PRI (23B)		-	2 (46-Ch)	4 (92-Ch)
	Max. IP Gateway (IP-GW4)		1 (4-Ch)	2 (8-Ch)	4 (16-Ch)
	Max. IP Gateway (IP-GW16)		-	2 (24-Ch)	4 (48-Ch)
ACCESSORY CAPACITIES					
Max. CS (Cell Station)			8	16	32
Max. 2.4GHz Wireless Telephone Handsets			28	128	128
Max. Doorphones / Door Openers			4/4	8/8	16/16
Max. Voice Message (OGM) Channels			2	8	16
Max. Voice Processing Systems			1-VPS Unit	2-VPS Unit	2-VPS Unit
BGM/MOH (Music on Hold) Inputs			1	2	2
External Paging Outputs			1	2	2
RS232C/SMDR Outputs			1	1	1
USB			1	1	1
Ethernet (10 BaseT) for CTI/Programming			1	1	1

* The standard total is 80 channels (16 ch/slot x 5). However, the maximum total is 96 channels if 2 T1 cards are mounted.
** The standard total is 160 channels (16 ch/slot x 10). However, the maximum total is 192 channels if 4 T1 cards are mounted.



Panasonic Consumer Electronics Company
Division of Panasonic Corporation of North America
Executive Offices: One Panasonic Way,
Secaucus, NJ 07094
(201) 348-7000
www.panasonic.com/csd

Panasonic Customer Service
9 am - 9 pm (EST) Monday through Friday;
10 am - 7 pm (EST) Saturday and Sunday
1-800-211-PANA
www.panasonic.com/support

Panasonic Puerto Rico, Inc.
San Gabriel Industrial Park,
Ave. 65 de Infanteria, Km. 9.5,
Carolina, PR 00985
(787) 750-4300

Design and specifications subject to change without notice.

Intelligent, Versatile Communications Solutions



These days, if your company wants to stay competitive it needs technology and equipment to help it adapt to new business realities. The KX-TDA50/100/200 are true converged communications systems, designed with incredibly versatile ways for you to structure your company's communications network. You can build a quick, efficient, decentralized organization under an easy-to-maintain centralized hub.

State-of-the-art wireless capability is designed into the KX-TDA systems, so it's easy to stay in touch with employees that are constantly on the move or away from their desks. For businesses with multiple locations our system can be networked together using advanced IP technology, ISDN, or basic T1 services. The KX-TDA systems support centralized voice mail, which services all locations within the extended voice mail network, and Network BLF, which allows you to view the status of extensions in other locations.

Convenience Even When You're on the Go



The KX-TD7685 and KX-TD7695 proprietary multi-line wireless phones give you the reduced interference, clarity and security of DECT 6.0 Technology, along with the functionality of a powerful system phone. Since they're wireless, the benefits of your phone system can now "follow" you wherever you are on your premises.

Digitally enhanced wireless telephony allows voice and data transmission via radio waves, within the range of up to 4 strategically-placed cell stations. As you move throughout the coverage area, the system provides seamless communication by handing off the call from cell station to cell station. It's a low-cost and highly flexible solution that keeps people connected whether they are in the warehouse, in a showroom, in a home or just about anywhere on site.

The KX-TDA50/100/200 are powerful and versatile communication systems that will easily adapt to any business, providing solutions that will improve the way your business communicates.

Grows with You

The KX-TDA50/100/200's modular design lets you expand the system as your needs evolve. It's easy to expand the KX-TDA systems because of the system's free slot architecture. You can insert expansion cards and access new features as well as expand your capabilities. This expandability means you can enhance system capabilities and features to meet your changing needs, without having to purchase a new system.

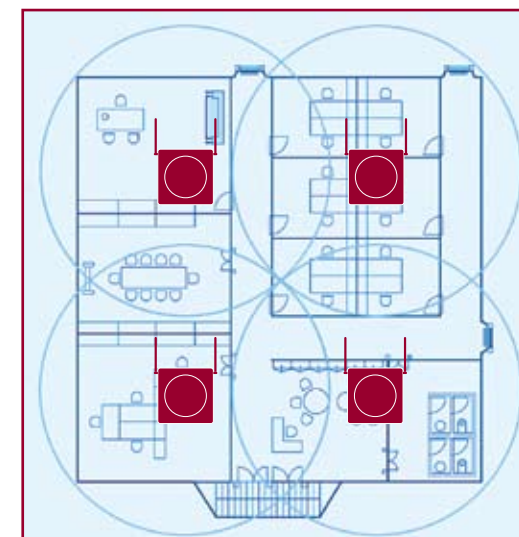
Maximum System Capacities*				
	Maximum Number of Ports	Maximum Number of CO's	Maximum # of KX-T7600 Series Proprietary Wired Telephones	Maximum Number of Wireless Telephones
KX-TDA50	24	12	24/48 DXDP	28
KX-TDA100	96	64	64/128 DXDP	128
KX-TDA200	192	128	128/256 DXDP	128

*System capacities will vary depending on the type of interface that is used to connect to the system.



Benefits of DECT 6.0 Wireless Telephone Integration

- Up to 128 Handsets Can Be Registered to the TDA100 or 200 and up to 28 on the TDA50
- Handsets Can Be Registered on up to 4 Systems
- Secure High-Quality Speech Reproduction and Excellent Reliability
- Customized Caller ID* let you assign different LED Colors and Ringtones to Specified Groups
- Programmable Multiple Ring Patterns, including Vibrate Mode
- Built-in 200-Station Name & Number Telephone Directory



KX-TD7685
Basic Model



KX-TD7695
Compact Business Model

KX-TD7685 / KX-TD7695

- 6 line, Blue LCD Backlight
- Illuminated Keypad
- Multiple Language Display
- Speakerphone
- Programmable Soft Keys
- PBX Functionality Support
- 200-Entry Phonebook
- Headset Compatible
- 9 Polyphonic Ringer Melodies and 6 Ringing Patterns
- Vibrate Alert

* Requires subscription to fee-based telephone service

Feature-Rich, Attractive and Easy to Use



Panasonic has phones perfect for your budget and needs. No matter which phone you choose, each is equipped with the standard features that will help you achieve new levels of communication ease. For greater convenience, choose from our line of high-end phones equipped with large LCD displays with soft key functionality.

- Programmable Keys with Red/Green LED
- Easy-to-Read Back-lit LCD Display
- Time-Saving, Easy-to-Use Navigator Key
- Ergonomically-Designed, 4-Step, Tilt-Angle Adjustment
- Simple Plug-n-Play USB Connection to a PC (KX-T7636 and KX-T7633 equipped with a KX-T7601)
- Headset Jack for Hands-Free Convenience
- Digital Duplex Speakerphone

KX-T7636 with KX-T7603

- 6-Line Back-lit Display
- 24 Programmable CO Keys
- Digital Speakerphone
- Compatible with Optional 12 CO Key and USB Port Add On Modules
- eXtra Device Port (XDP) and DXDP
- Shown with optional KX-T7603 12-CO Key Add on-Module



KX-T7633

- 3-Line Back-lit LCD Display
- 24 Programmable CO Keys
- Digital Speakerphone
- Compatible with Optional 12 CO Key and USB Port Modules
- eXtra Device Port (XDP) and DXDP



KX-T7630

- 3-Line LCD Display
- 24 Programmable CO Keys
- Digital Speakerphone
- eXtra Device Port (XDP) and DXDP



KX-T7625

- Digital Speakerphone
- 24 Programmable CO Keys
- eXtra Device Port (XDP) and DXDP



KX-T7640

- Digital DSS Console
- 60 Direct Stations Selection (DSS) Keys



KX-T7667

- 1-Line Back-lit LCD Display
- 12 Programmable CO Keys
- Message/Ringer Lamp
- Digital Speakerphone
- DXDP

IP Telephones An Affordable Alternative Solution



Panasonic IP phones support the latest VoIP technology and are a perfect way to give telecommuters and remote employees access to corporate voice services.*

As telecommuting and remote locations become the best way to organize your business, it's necessary to have an affordable and effective solution to keep your off-location employees and offices connected. The VoIP (Voice over IP)-enabled Panasonic telephony solution gives your employees easy access to your company's central communication hub, letting them enjoy the feature-rich capabilities of the TDA50/100/200 Hybrid IP PBX - regardless of their location.

And you can turn your PC into a phone with the IP Softphone, giving you and your employees yet another convenient way to communicate over long distances.

VOIP utilizes your existing broadband backbone, so upgrade to a cost-effective and efficient decentralized network and make the most of the communications infrastructure your company already has.

KX-NT265 VoIP Telephone

- Speakerphone
- 8 Programmable CO Keys with Dual Color LED
- 1-Line Alphanumeric Backlit LCD Display
- Large Message/Ringing Lamp (red/green)
- AC or Ethernet-Powered
- Headset Jack



KX-NT136 VoIP Telephone

- Speakerphone
- 24 Programmable CO Keys with Dual Color LED
- 6-Line Alphanumeric Backlit LCD Display
- Large Message/Ringing Lamp (red/green)
- Ethernet Port for PC
- AC or Ethernet Powered
- Headset Jack



KX-TDA0350 VoIP Softphone

- Allows a PC to Operate as a system telephone
- Emulates a KX-NT136 Telephone
- 24 Programmable CO Keys with Dual Color Indicators
- 6-Line Alphanumeric Display with Interactive Soft Keys
- Easy-to-Use Keyboard or Mouse Operation
- Message Waiting Indicator for VM
- Network Connection Indicator

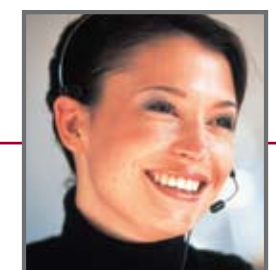


- Panasonic IP telephones look and work just like our standard phones with access to most of the TDA system features. This makes TDA50/100/200 IP telephones easy for employees to learn and operate.

- Superior voice quality is ensured through the conversion of digital voice data into standard RTP/IP packets, which are then transmitted over the TCP/IP network. This facilitates Quality of Service by supporting VLAN tagging (802.1p/ Q) to enable dedicated bandwidth to handle voice traffic. The IP VPN tunnel helps ensure that voice speech is encrypted, so to minimize the chance of eaves-dropping as the voice packets travel over the Internet.

- Employee moves within the network are easy since phones can be plugged into LAN network connection with virtually no reprogramming.

- Setting up your VoIP network is inexpensive - IP phones use a standard broadband Internet connection*, so they're integrated easily into your existing broadband network. You can even consolidate your long distance calling through the central TDA PBX voice network and dialing plan, giving you the simplest, most affordable communications solution ever.



*Requires a VPN connection and additional hardware.

Excellent Reliability and Maintenance



The KX-TDA systems are assured by rigorous quality control and extensive testing before they leave the factory, and comes with a 2-year warranty. The systems are also designed for quick, easy maintenance, keeping downtime to an absolute minimum so your company can operate with as little disruption as possible. You can also change or upgrade modules without switching off the system. The KX-TDA50/100/200 are RoHS compliant, meeting the international standard for the restriction of the use of certain hazardous substances in electronic equipment, ensuring your system will meet the international environmental standard that's becoming increasingly important.

Integrated Solutions



The KX-TDA50/100/200 systems are truly integrated, connecting your dispersed, off-location offices and employees, while giving you full access to the system's incredibly rich and varied features. Your employees can use the latest in communication technology, and you can manage and maintain your network to your exact specifications.

Panasonic integrated solutions provide a wide variety of options that allow you to design a system that will meet your current and future business requirements—saving you time and money, and maintaining employee and customer satisfaction.

Programming & Maintenance

Panasonic certified technicians use a Windows®-based programming tool with multiple password-protected access points to program the system and perform maintenance. The system can also be accessed remotely via an optional dial-up modem or through the Internet.

Secure Digital (SD) Card

Even if your system suffers a catastrophic failure, all of your system information is saved and can be reloaded easily with our Secure Digital (SD) card. In addition, the SD card makes it simple to upgrade the system with new features.



Intelligent Call Management

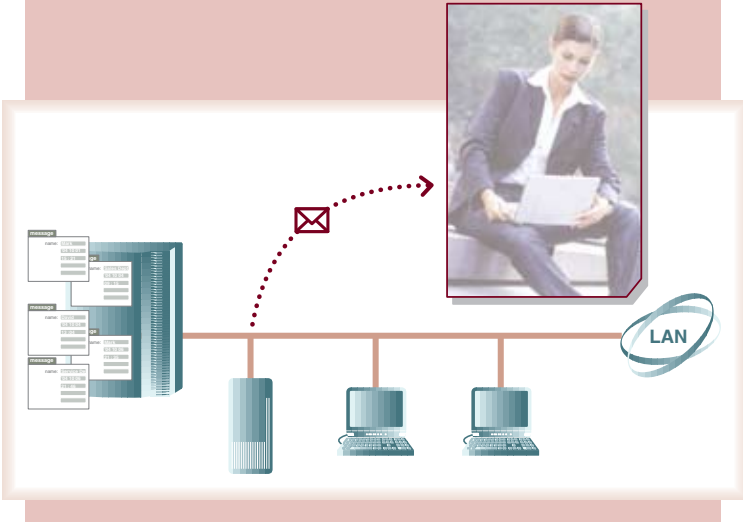
For businesses with high-volume customer call traffic, keeping calls flowing smoothly and quickly is essential. Panasonic KX-T7636, and KX-T7633 digital telephones equipped with a USB module do their part by connecting to a personal computer via USB, allowing telephone systems and computer systems to share the workload. For example: the add-in USB toolbar for Microsoft Outlook® allows you to use your Outlook contact list to make calls. You can also create your own pop-up call notification for incoming calls based on caller ID* from your Microsoft Outlook contact list. This Computer Telephony Integration (CTI) helps enhance both efficiency and customer satisfaction, because employees can handle calls quickly and more appropriately for each occasion.



*requires fee-based phone company service

Integrated Messaging Solutions

Get an edge in handling your customers' calls with integrated messaging solutions, which automate your message delivery so your customers can get the quick and easy support they deserve. You also benefit from a system that takes messages automatically and keeps you in touch 24 hours a day. And of course, you'll love the cost savings. Panasonic messaging solutions mean convenience for you and satisfaction for your customers.



Email Integration and Voice Mail with Auto Attendant



By adding a KX-TVA series voice processing system, your calls can be easily managed by using the built-in automated attendant service, voice mail with email integration, and more. And with the high level of integration between the KX-TVA and the KX-TDA, you can enjoy features like voice mail LCD menus that allow you to access and manage your voice mailbox using the LCD display and soft keys. With all these choices, it's easy to custom design a system that's right for you.



KX-TVA200

- 4 to 24 Ports and 1024 Mailboxes
- 1000-Hour System Recording Time
- E-message
- Telephone LCD Voice Mail Menu
- Customer Service
- Live Call Screening (LCS)
- Two-Way Recording
- Two-Way Transfer

Microsoft® and Outlook® are registered trademarks of Microsoft Corporation.

Networking Solutions

Flexible networking solutions let you build your company's office and employee structure for the 21st century: employees can telecommute and satellite offices can be brought under a single, easily-managed network. They're designed to help your business benefit from cost savings and infrastructure improvements of VoIP technology. By combining rich voice communications with enterprise data networks and applications, Panasonic helps you accomplish your most important business objective - delivering lower costs and enhanced value from your network infrastructure investment.

VoIP is the latest proven technology for voice communications in which packets of digitally compressed voice are sent over data networks, and then are converted back to voice once it reaches its destination. By leveraging existing data networks, VoIP can bypass PSTN and therefore help avoid costs associated with PSTN calls no matter how far the distance and how long the conversation. VoIP is an ideal solution for site-to-site communications between multi-site offices - as well as for networking branch office and remote employees, small office/home office (SOHO) workers, and home sales personnel. This allows for a flexible working environment and lower costs.



Choose the Network Medium That's Right For You

The KX-TDA lets you choose the communication medium that works best for your business. VoIP allows your business to connect over your existing broadband network, and ISDN* transmits digital voice data over your existing telephone wires. Both feature QSIG, a high-level protocol for system-to-system communications, allowing your network to operate as if it were a single, cohesive unit. For the simplest option, use a T1* network, connecting you from Point A to Point B over a crystal clear voice channel.

Centralized Voice Mail and Network BLF

For businesses with multiple locations, our systems can be networked together using advanced IP technology or ISDN*. The KX-TDA supports centralized voice mail, which services all phones within the network with features like Network BLF, which allows you to view the status of extensions in other locations.

Wireless Station Roaming

Within a network, one wireless phone can be registered to a maximum of 4 KX-TDA systems. This allows a wireless station user to go to other offices and receive calls directed to them on their wireless station. This is accomplished by entering the remote nodes extension information into one TDA location so calls directed to it at one location can be handled at any location transparently.

* ISDN and T1 not supported in the KX-TDA50.

Call Center Solutions

Your phone calls can be distributed and organized according to purpose and priority, making your call center more efficient while treating your customers right. You can tailor-fit your network to your exact needs with the KX-TDA's powerful and precise data and information reports on all aspects of your telephony system. Calls can be queued while your team is busy with other calls, and music or prerecorded promotional messages can be played for waiting callers to help reduce lost calls and missed business opportunities.

You can also assign an additional backup destination for calls that are not answered within a specific period of time. Preferred customers and VIPs can even have their calls connected with priority or to a specific staff member, allowing you to provide special attention to special clients.

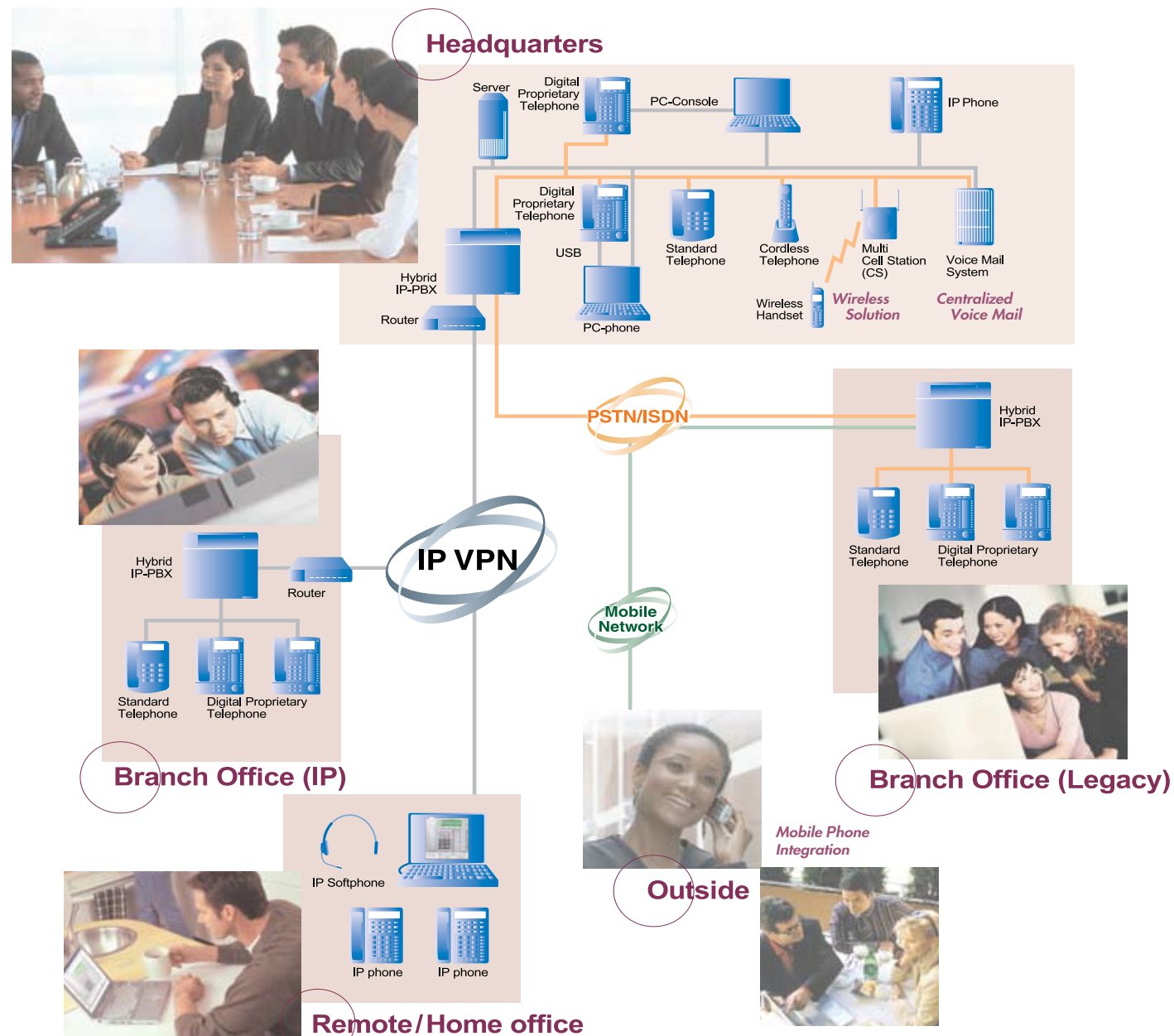
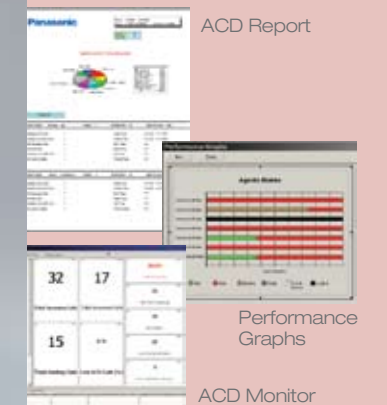


UCD (Unified Call Distribution)

The KX-TDA50/100/200 can be programmed to handle incoming calls so they get to the correct department or individual without any disruption to the caller. Calls can be directed to a specific individual, group, live or auto attendant, voice mail, or any combination of the above.

KX-NCV200 ACD Report Server

The NCV200 ACD report server brings call center functions to your KX-TDA50/100/200, providing you with monitoring and performance reports, call information history, and comprehensive performance reports in emails or color graphs.



ACD Report

Performance Graphs

ACD Monitor

KX-TDA DIGITAL HYBRID IP-PBX SYSTEM FEATURE LIST			
System Features	KX-TDA50	KX-TDA100	KX-TDA200
Absent Message Capability	X	X	X
Account Code Entry (Forced Verified)	X	X	X
Account Code Entry (Optional)	X	X	X
A.R.S. (Automatic Route Selection)	X	X	X
Automated Attendant (with DISA/OGM)	X	X	X
Automatic Answer, Intercom and Transferred Calls	X	X	X
Automatic CO Hunting	X	X	X
Automatic Fault Logging	X	X	X
Automatic Rerouting of VoIP Calls to Public CO	X	X	X
B.G.M. (Back Ground Music) Jack	X	X	X
Call Back Busy	X	X	X
Call Forwarding	X	X	X
Call Hunting (Terminal or Circular)	X	X	X
Call Log	X	X	X
Call Parking Zones	X	X	X
Call Park Retrieve	X	X	X
Call Pick Up	X	X	X
Call Transfer/Transfer Recall	X	X	X
Call Waiting	X	X	X
Caller ID, Call Logging	X	X	X
Caller ID, Call Log Lock	X	X	X
Caller ID, Callback	X	X	X
Caller ID, Call Waiting	X	X	X
Caller ID, Date and Time Adjust	X	X	X
Caller ID (Name and/or Number)	X	X	X
Caller ID TO SLT	X	X	X
Class of Service	X	X	X
Cellular Phone XDP Parallel	X	X	X
Centralized VM (Requires KX-TVA200 VP system)	X	X	X
CO access through VoIP using PIN	X	X	X
CO Limited Duration Timer	X	X	X
CO Line Names	X	X	X
CO Line Status (Two Color LED)	X	X	X
Common extension numbering plan for two PBXs	X	X	X
Conference Calling (8 Party)	X	X	X
Data Line Security (for Fax or Modem)	X	X	X
Data and Time Display	X	X	X
Delayed Ringing	X	X	X
D.I.L. (Direct in Line)	X	X	X
DISA automatic access by cellular phone	X	X	X
D.I.S.A. (Direct Inward System Access)	X	X	X
D.I.S.A. Single Digit Access	X	X	X
Distinctive Ringing Tone (CO, Intercom)	X	X	X
Distinctive Ring Tone (Doorphones)	X	X	X
D.N.D. (Do Not Disturb)	X	X	X
Do Not Disturb Override	X	X	X
Door Intercoms/Door Opener Contacts	4	8	16
DSS/BLF Consoles	X	X	X
Dual Port Usage (Parallel SLT Station)	X	X	X
Duration Time of Call Display	X	X	X
DXDP (Version 1.1)	X	X	X
Electronic Station Lock	X	X	X
Emergency Call Number Programming	X	X	X
End of call detection for analog CO-CO by DISA	X	X	X
Extension Groups	X	X	X
Extension Name on Display When Idle	X	X	X
Executive Hold	X	X	X
Executive Override	X	X	X
Executive Override Deny	X	X	X
External Modem Support	X	X	X
External Paging Ports	X	X	X
External Sensor Input	X	X	X
Flexible CO Keys (DSS/BLF, One Touch Dial)	X	X	X
Flexible DSS Keys (One Touch, Feature Access)	X	X	X
Flexible Key Assignments	X	X	X
Flexible Line Assignment	X	X	X
Flexible Night Service/Programmable/Manual	X	X	X
Flexible Ringing Assignment (Day, Night)	X	X	X
Flexible Ring Assignment (Lunch)	X	X	X
Flexible Station Numbering	X	X	X
Hands-Free Answer Back Intercom	X	X	X
Handset/Headset-Display Phones	X	X	X
Hold	X	X	X
Hold Recall/Hold Reminder	X	X	X
Hotel/Motel Features	X	X	X
Ring Message Waiting	X	X	X
Remote Station Lock	X	X	X
Quick Dialing	X	X	X
Room Status	X	X	X

KX-TDA DIGITAL HYBRID IP-PBX SYSTEM FEATURE LIST			
System Features	KX-TDA50	KX-TDA100	KX-TDA200
ICD group call distribution to longest idle extension	128	128	128
ICD group proprietary telephone simultaneous ring	128	128	128
ICD group ring with cellular phones	X	X	X
ICD groups	X	X	X
ICD groups members	X	X	X
Incoming call log for answered ICD group call	X	X	X
Industry Standard Telephone Capability	X	X	X
Internal Paging (All Call Paging)	X	X	X
Internal Paging (Zone Paging)	X	X	X
ISDN Primary Rate Interface (PRI) with QSIG		X	X
Last Number Redial	X	X	X
Limited Call Duration	X	X	X
Live Call Screening (DPITS only)	X	X	X
Live Call Screening, Remote (DPITS only)	X	X	X
Login/Logout (Hunt, Ring, UCD)	X	X	X
Login/Logout	X	X	X
Lunch/Break Mode	X	X	X
Memory Back-up	X	X	X
Message Waiting—Proprietary Phones	X	X	X
Message Waiting SLT		X	X
Military Time Display	X	X	X
M.O.H. (Music on Hold)	X	X	X
Multi-Cell Wireless	X	X	X
Multilingual Displays (5)	X	X	X
Multiple Voice Mail Lamps	X	X	X
Network Call Forward for PRI23 QSIG	X	X	X
Network Call Transfer for PRI23 QSIG	X	X	X
Network DSS, 250 keys for 8 TDA PBXs	X	X	X
Network ICD group	X	X	X
Off-Hook Tone Signaling	X	X	X
Off-Hook Monitoring	X	X	X
(KX-T7431, 7433, 7436, 7600 Series)			
Off-Hook Voice Announce	X	X	X
(KX-T7235, T7436, 7600 Series)			
On-Site Programming Diagnostics	X	X	X
Operator Call	X	X	X
Portable Station Roaming (using network ICD group)	X	X	X
Power Failure Transfer	X	X	X
Pre-Selection (Central Office or Intercom)	X	X	X
Privacy Release	X	X	X
Remote Programming and Diagnostics	X	X	X
Remote Station Lock Control	X	X	X
Ring Groups	X	X	X
Ring Groups DISA	X	X	X
Ringing Line Preference	X	X	X
Saved Number Redial	X	X	X
Secret Dialing	X	X	X
Seven Day ARS Time Tables	X	X	X
S.M.D.R. (Station Message Detail Recording)	X	X	X
Station Name Display	X	X	X
Station to Station Messaging	X	X	X
Station Speed Dial Numbers	X	X	X
System Speed Dial Numbers	X	X	X
TAPI Compliant	X	X	X
T1 Interface		X	X
T.A.F.A.S. (Trunk Answer from any Station)	X	X	X
Toll Restriction	X	X	X
Toll Restriction Override	X	X	X
Tone/Pulse Conversation	X	X	X
Tone/Pulse Dialing (By CO Line)	X	X	X
Transfer from cellular phone	X	X	X
Transfer (Screened/Unscreened)	X	X	X
Trunk Groups	X	X	X
Two-Way Record (DPITS)	X	X	X
Two-Way Transfer (DPITS)	X	X	X
Unattended Conference Call	X	X	X
Uniform Call Distribution without OGM	X	X	X
Uniform Call Distribution with OGM	X	X	X
Voice Mail, Automatic Configuration (DPITS only)	X	X	X
Voice Mail Integration (Inband)	X	X	X
Voice Mail Integration (DPITS)	X	X	X
Voice Mail Ports	X	X	X
Voice Messaging Card	X	X	X
VOIP Gateway	X	X	X
VOIP Extension	X	X	X
Walking Class of Service	X	X	X
Whisper OHCA	X	X	X
Wrap-up for outgoing call	X	X	X

Endless Solutions with Digital Communication



Manufacturing Logistics Call Center Customer Service Sales/Marketing Engineering

Personal contact with your customers is essential for success, and the communications system you choose determines how well you stay connected. That's why Panasonic builds its products with the quality and reliability you can count on. Whether it's IP, traditional telephony, wireless technology, or decentralized networks, the Panasonic Hybrid IP PBX systems keep you in touch.

Certification Program

The KX-TDA 50, 100, and 200 and associated equipment are Panasonic Consumer Electronics Company certified dealer models. Please consult your dealer/installer to determine if they have successfully completed the Panasonic Certification Program. Visit www.Panasonic.com/csd to locate a certified dealer near you.



X=Yes
Units, Weights and Specifications subject to change

LIMITED WARRANTY
 • All Panasonic supplied "KX-TDA" Digital Hybrid IP-PBX + components and KX-T7600 series (wired telephones) 2 year Parts and Labor (some models)
 • All other Panasonic supplied Hybrid, Digital Hybrid and Voice Processing Components 1 Year Parts and Labor
ALL OF THE ABOVE SUBJECT TO TERMS OF WRITTEN WARRANTY